



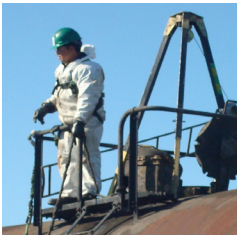
milerail *environmental·rail services*

Company Summary

what we do

Mile Rail is an environmental and rail services company based in Kansas City, MO, and Indianapolis, IN with satellite locations and mobile units that operate on a nationwide footprint. We repair and clean virtually all types of railcars containing a comprehensive range of non-hazardous, hazardous and food grade products and wastes. We also offer extensive industrial maintenance (IM) services (see "Company Summary - Industrial Maintenance").

Complementing our rail and industrial maintenance operations, we offer a vast array of waste management services including hazardous and non-hazardous waste disposal, lab packing, universal waste handling, product destruction, waste transfer, waste bulking and storage, industrial cleaning, and DOT, OSHA and RCRA safety training.



We strive to always exceed customer expectations through our high level of communication, leading turnaround and response times, and highly competitive pricing. Mile Rail delivers a premium service and ongoing value by partnering with its clients.

what sets us apart

- Differentiated business model, combining rail and environmental expertise
- Partnership mentality, fewer customers, stronger integrated relationships
- Focus on compliance, strong awareness and sensitivity to client liabilities
- High level of communication, availability to clients
- Service-oriented, flexible, transparent, analytical
- Competitive pricing, fast turnaround times

railcar services summary

Mile Rail combines deep in-house rail, scientific and environmental expertise and resources, proven means and methods, and state of the art and highly specialized equipment to deliver industry standard repair and cleaning services to our clients.

railcar repair

- AAR M-1002 F, G, and L repair capabilities
- Tank car valve rebuild and NDT testing
- Running repairs on wide range of rolling stock
- Full hopper car repair
- Wheels
- Inspections
- AAR billing

railcar cleaning and blasting

- Haz, non-haz, food grade commodities
- Food grade sanitation
- Kosher maintenance and "kosherization"
- Caustic, wide array of surfactants and equipment
- Brush, commercial, white blasting and liner removal
- Nitrogen padding, oil wipedowns
- Liner repair
- Flaring

other railcar services

- Inspections
- Demolition and scrapping
- Transloading

locations and service footprint

- Kansas City, Missouri
 - Headquarters for railcar services group
 - Centrally located, 30,000 ft of track, 100 acres of space
- Mobile operations
 - Mob for permanent, reoccurring, event driven projects
 - Midwest footprint, increasing nationwide coverage

fast facts

- Strong safety record
- History of regulatory compliance
- Recognized for positive impact on local communities
- www.milerail.com
- 866.614.8671 main
- 866.562.1217 fax

